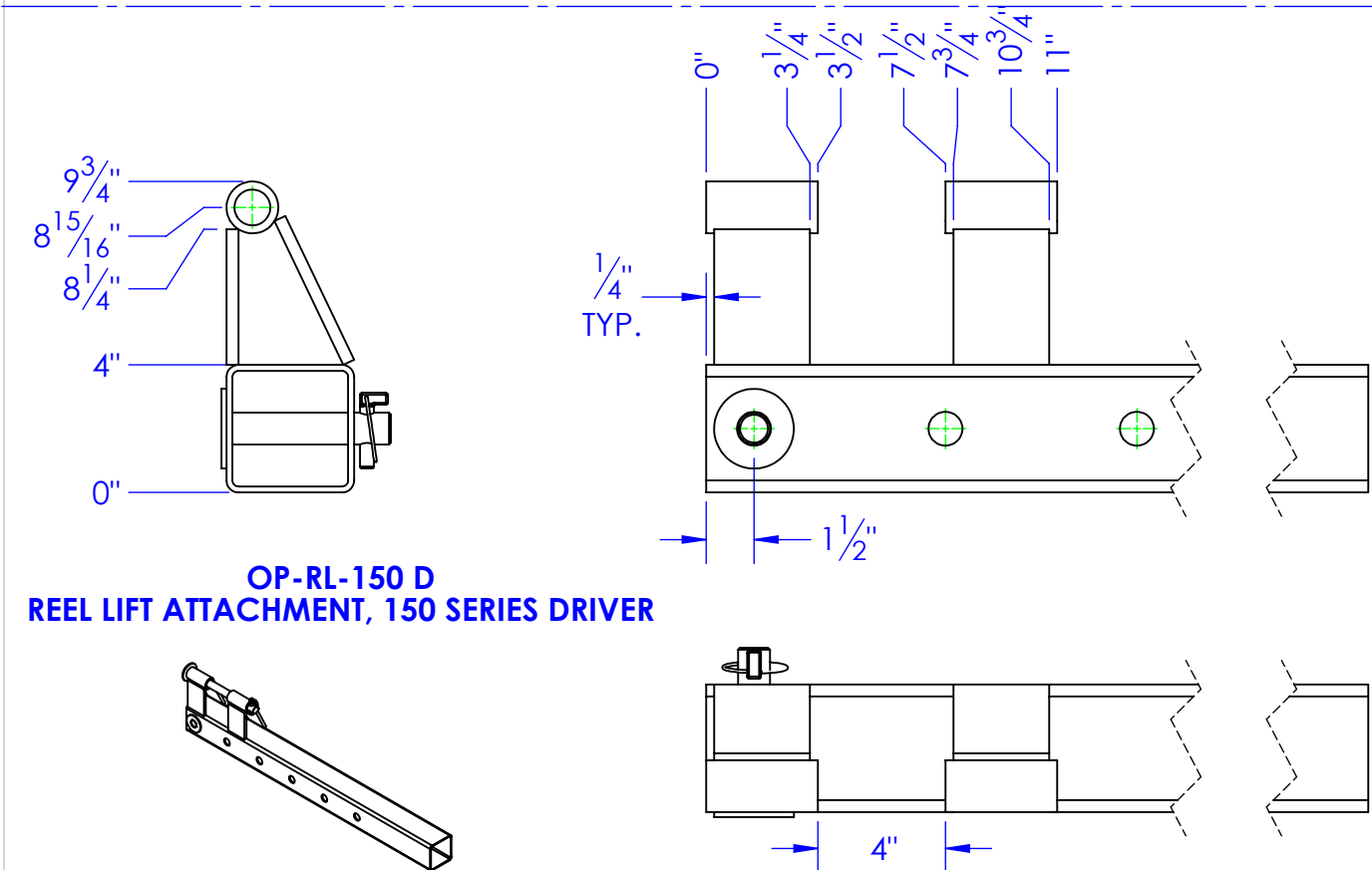
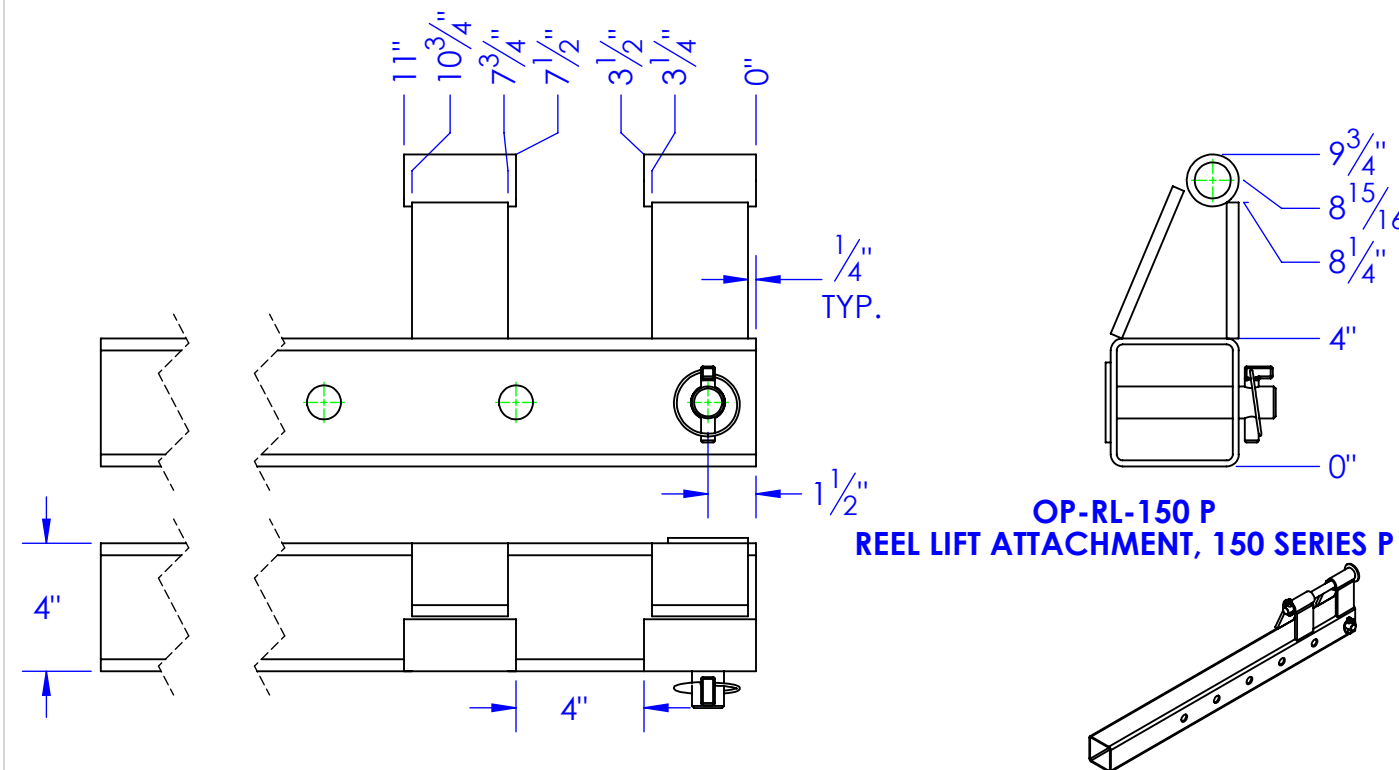
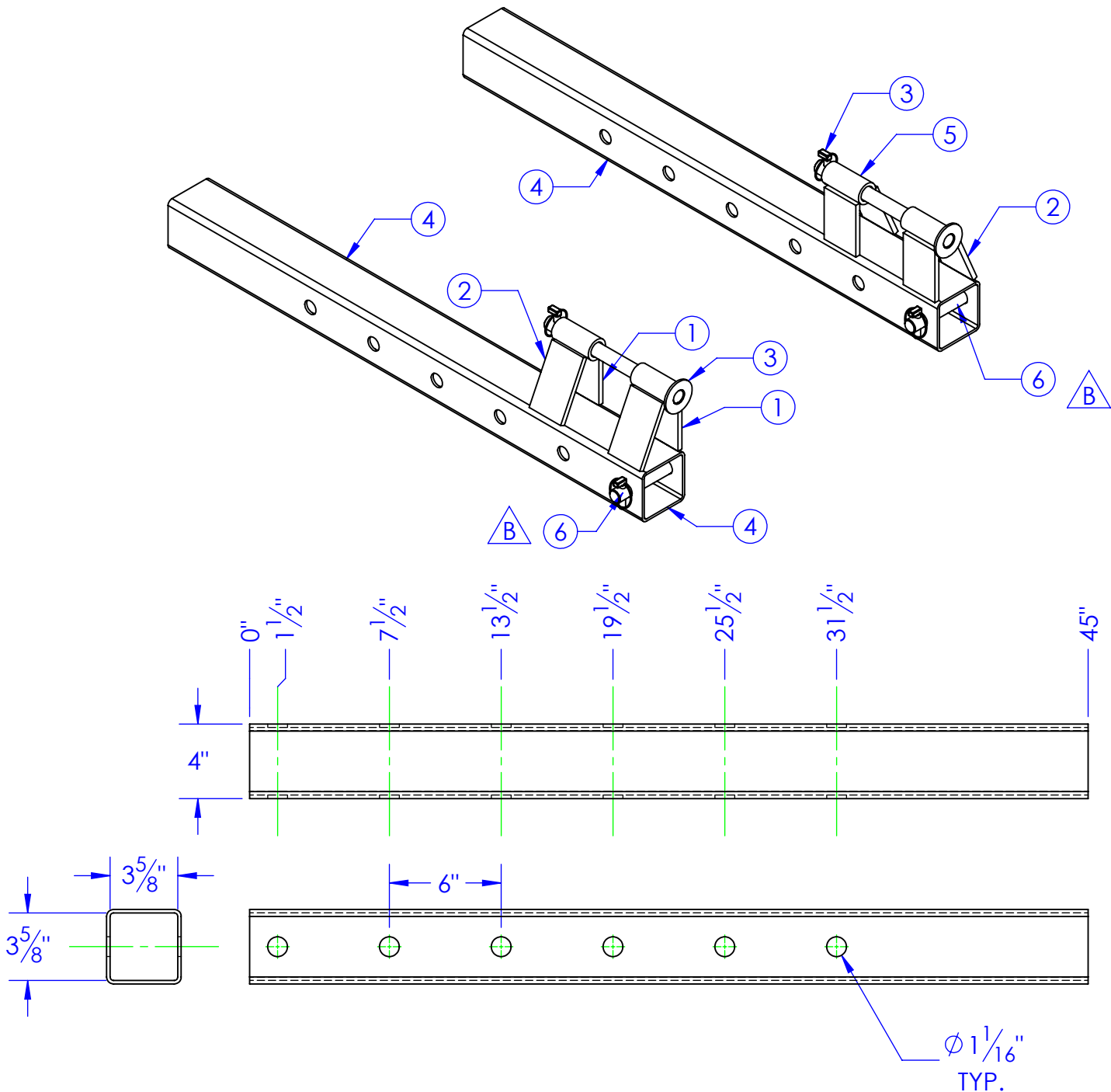


ITEM NO.	PART NUMBER	DESCRIPTION	QTY.
1	FL.375 x 3 L 4.25	LENGTH: 4-1/4"	4
2	FL.375 x 3 L 5	LENGTH: 5"	4
3	RE-PN-C1X1225	PIN, CONNECTING 12-1/4"	2
4	ST-4 x.1875 L 45	LENGTH: 45"	2
5	ST-MT 1.625 x 1.125 L 3.5	LENGTH:3-1/2"	4
6	RE-PN-C1x525	PIN, CON, 5-1/4"	2



REV.	REVISIONS	DATE	APPROVED
	DESCRIPTION		
A	NEW STANDARD DWG FROM RL150	7/23/2012	
B	REPLACED RE-PN-C1X475 WITH RE-PN-C1X525	12/23/2015	



PROPRIETARY AND CONFIDENTIAL
THE INFORMATION CONTAINED IN THIS
DRAWING IS THE SOLE PROPERTY OF
<INSERT COMPANY NAME HERE>. ANY
REPRODUCTION IN PART OR AS A WHOLE
WITHOUT THE WRITTEN PERMISSION OF
<INSERT COMPANY NAME HERE> IS
PROHIBITED.

UNLESS OTHERWISE SPECIFIED:	DRAWN	NAME	DATE
DIMENSIONS ARE IN INCHES TOLERANCES: FRACTIONAL $\pm 1/16$ ANGULAR: MACH ± 1 BEND \pm TWO PLACE DECIMAL ± 0.010 THREE PLACE DECIMAL ± 0.005	PART #	CAITLYN	12/23/2015
MATERIAL	ASM #	OP-RL-150	
DO NOT SCALE DRAWING	COMMENTS:	REEL LIFT ASSEMBLY 150 SERIES	

P.O. BOX 248, SABETHA KS. 66534
(785) 284-3674 FAX (785) 284-3931

TRIPLE C
INC.

SIZE	DWG. NO.	REV
B	90-1316 B	B
SCALE: 1:10	WEIGHT: 46.98	SHEET 1 OF 1